

| **Grow** your career.
| **Level up** for the future.

Management 2: **The Advanced Manager's Course**

Ignite your next chapter in leadership.



Management 2: The Advanced Manager's Course

Consistently rated by executives as one of their most important learning experiences, this 5-day program gives experienced leaders powerful insights into the contemporary issues confronting organizations today. Join other accomplished mid-career and senior leaders as you evaluate your own leadership style and learn new strategies to foster stronger teamwork and accountability within a multi-generational workforce.

The Power-Up Program For Experienced Leaders.

Grow your career.
Level up for the future.



5 days of study over 5 weeks



Book this program [online](#)



Program Highlight



For Busy Professionals

Rich learnings in 5 days of accelerated study, so you can get back to leading in no time.



Learn from the Pros

Train with top-rated Schulich instructors that are consistently ranked among the world's best.



Interactive

Hands-on and participatory programming.



Digital Badge

Receive an authentic digital badge from Canada's #1 business school.

Program Faculty



Haniyeh Yousofpour

PhD, MBA, PMP, PE
Certified



Sanjay J. Dhebar

MBA



Stephen Friedman

MA Psych



The foundations of this program have lead me to a better level of knowledge and understanding to help move the organization forward by developing my own team.

R. Maarse

Packaging Manager Sleeman Breweries Ltd.

Management 2 was exactly the program I needed to provide excellent direction and clear pathways to helping deliver excellence in our corporate culture and workplace.

P. Ogilvie

CEO, TradeTown Canada



Schulich
School of Business
Executive Education

YORK U

Program Content

Module 1: From Manager to Leader

The goal of this first session is to guide participants into making a shift from manager to leader.

- Learners will start with an introduction to leadership: after learning about different leadership styles, they will explore their leadership style and the effect it has on their team.
- They will then dive into the topics of emotional intelligence and empathy, which are key pieces to turn people managers into leaders that can inspire and engage their teams.
- The final activity of this first day will be a piece about time and priority management, two things that even experienced leaders don't necessarily do well.

Module 2: Leading a High Performing Team

The second day will build on the first. Participants will expand from the self-awareness dimension to a more connected one. Here are the topics that will be covered:

- Building trust by manifesting ability, reliability and consistency
- Adapt your emotional response in difficult situations
- Manage and solve conflicts within your team
- Set aligned goals for a high-performing team

Program Content

Module 3: Building an Effective Team

This third day will focus on building your team: from acquiring and retaining talent to guiding and supporting team members in their professional development. It will cover the following:

- What a learning culture is and how it contributes to forming a better team for better business
- Build and sustain this learning culture:
 - Professional development needs assessment and support
 - Future skills planning
 - Achievement recognition
- Talent acquisition strategy

Day 4: Leading Through Change

This session aims at giving participants the tools to find possibilities to drive organizational change, while also being resilient and open to adjust to what they cannot change.

It addresses the following topics:

- Organizational change and continuous improvement
- Change management
- Influencing and persuading
- Personal and team resiliency

Program Content



Module 5: Sparking the Change

Ambiguity, adaptability and resilience are inevitable in today's business. This final section of the program is hence focused on sparking the change and advocating for it.

It will address the following skills and topics:

- Developing a growth mindset, geared towards innovation
- Making evidence-based strategic decisions
- Leading business through an ever-changing world
- Upward management: making the case for investments and changes

Who Will Benefit



Managers

Build on your fundamental knowledge of management and perform your current leadership role better than ever.



Senior Leaders

Supercharge your management skills for immediate impact and connect with other leaders to learn from their experiences.

Completion Benefits



Advanced

Shows that you're able to apply knowledge at a strategic, organizational level.

After completing Management 2: The Advanced Managers Course, you'll receive an authentic digital badge from the #1 business school in Canada that employers will recognize.

As more and more companies look for candidates with specific skills, this badge on your CV will be a credible assurance of your achievements and expertise, allowing the right roles to find you faster.



30 PMI-PDU. Successful completion of this program will earn PMI® Members, in good standing, Education PDU's in alignment with the PMI Talent Triangle. If this applies to you, you will receive a PDU Claim Code at the conclusion of your program. For more information on how to earn your PDU's, we recommend logging into your Continuing Certification Renewal System (CCRS) to report PDU's and view your certification records. Following this, if you require additional assistance, please contact PMI Support directly.



35 HRPACPD Hours. This program has been approved for CDP hours under Section A of the Continuing Professional Development (CPD) Log of the Human Resource Professionals Association (HRPA). Be sure to note the program ID number on your CPD log. For more information about certification or continuing professional development, visit the HRPA website at www.hrpa.ca/hrdesignations/Pages/Continuing-Professional-Development.aspx

Why a Certificate at Schulich ExecEd?

There will no longer be a single transition from graduation to work in one's life.

Because few of us have the same job for life, we constantly have to re-invent ourselves, learn new skills and adapt to the changing marketplace and business environment. Today's professionals and executives must be able to quickly develop and fine-tune personal business skills to adapt and grow.

We are #1 Business School in the country

We have the privilege of being ranked #1 and teaching top students from around the world.

Our Program is Unique

Distinction from growing competition in the job market.

We Provide a Combination of Skill Specialization & Range

Deepen your current skills and acquire new ones.



About Schulich ExecEd

At Schulich ExecEd, the professional development arm of the world class Schulich School of Business, all our programs are non-degree, mid-career acclaimed qualification that employers recognize and that you can add to your CV.

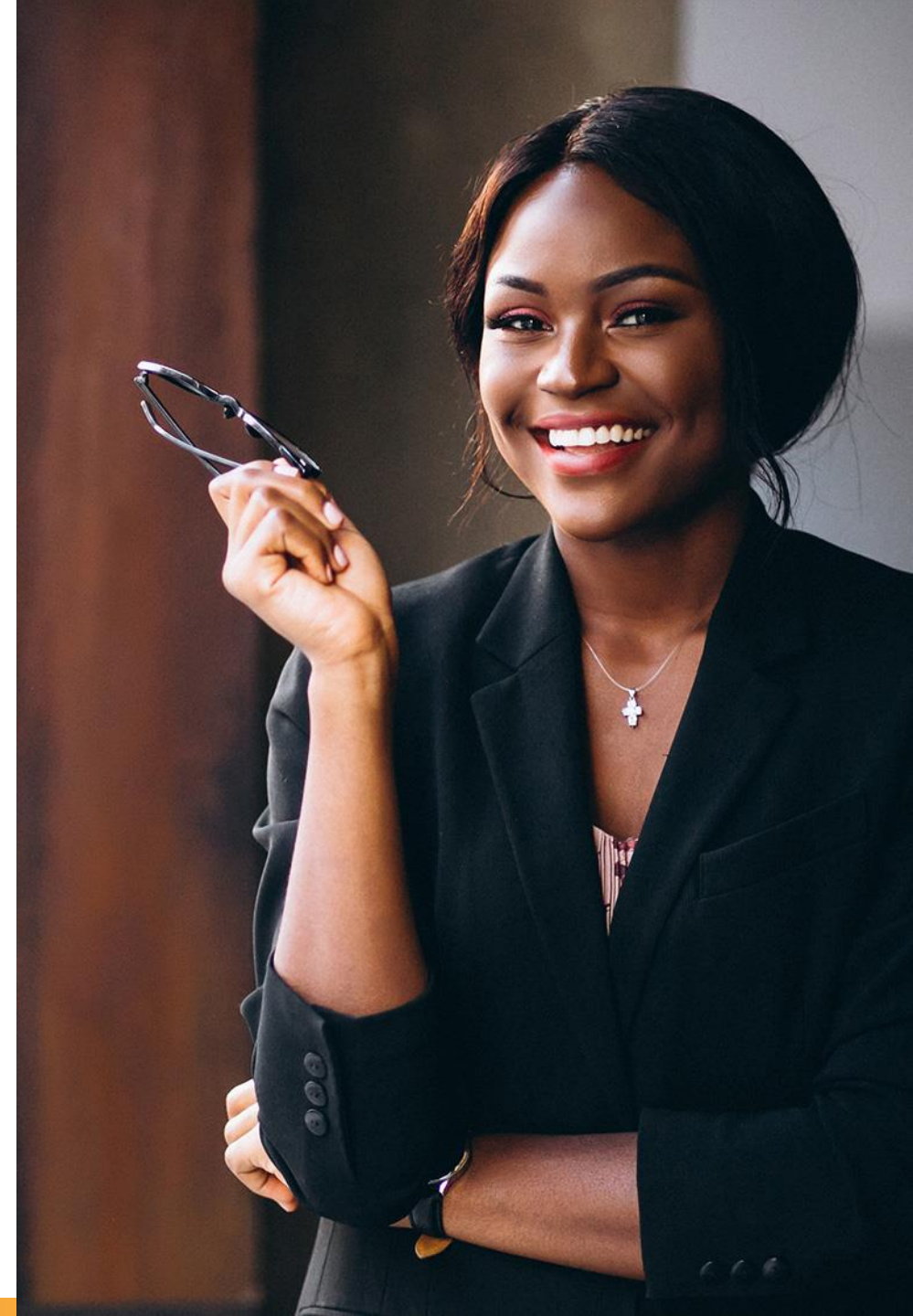
We provide:

- Short programs building an individual business skill have industry recognized credentials for that skill
- Certificate programs build a wider skill set with a number of key skills
- Masters Certificates are an intense dive into Leadership, Management or specific Business skillsets. This is our highest mid-career professional development business school certification

Key Stats:

- Ranked #1 business school in Canada
- Ranked #12 in global MBA ranking
- Educated over 80,000 professionals across the world.
- Delivered over 4,000 programs virtually and in-person
- 96% of our graduates used knowledge or skills from the program on the job
- 87% of our graduates reported improved job performance
- Worked with over 500 companies worldwide

Over 450 leading faculty in areas of management, leadership, communications, finance, marketing, business development and strategy





Schulich ExecEd, Schulich School of Business at York University

500-222 Bay Street. Toronto, Ontario M5K 1K2

1 800.667.9380

execedinfo@schulich.yorku.ca

execed.schulich.yorku.ca



SchulichExecEd



SchulichExecEd



SchulichExecEd



SchulichExecEd

